

# CONNECTED INNOVATIONS FOR A SAFER WORLD

INTELLIGENT DIGITAL INFRASTRUCTURE

---



# INSIGHT TO IMPACT

Harnessing the power of data to make life-saving decisions when it matters most.

## INTELLIGENT DIGITAL FOUNDATIONS, BUILT FROM THE DEVICE UP

The Ci Safe digital ecosystem is built on a network of intelligent, data-mining sockets and supporting devices that continuously monitor electrical faults, gas leaks, water leaks, electrical overloading, overheating appliances, critical sounds, abnormal device behaviour, temperature, and energy use.

This data is sent to the cloud and accessed through our native app (Ci SafeConnect). Or integrated with building management systems and tools such as emergency response dashboards — to deliver real-time alerts, analytics and insights.

This creates a smart, responsive safety network that strengthens fire prevention across homes, medium and high rise buildings, businesses, and cities — without the need for a full system overhaul.

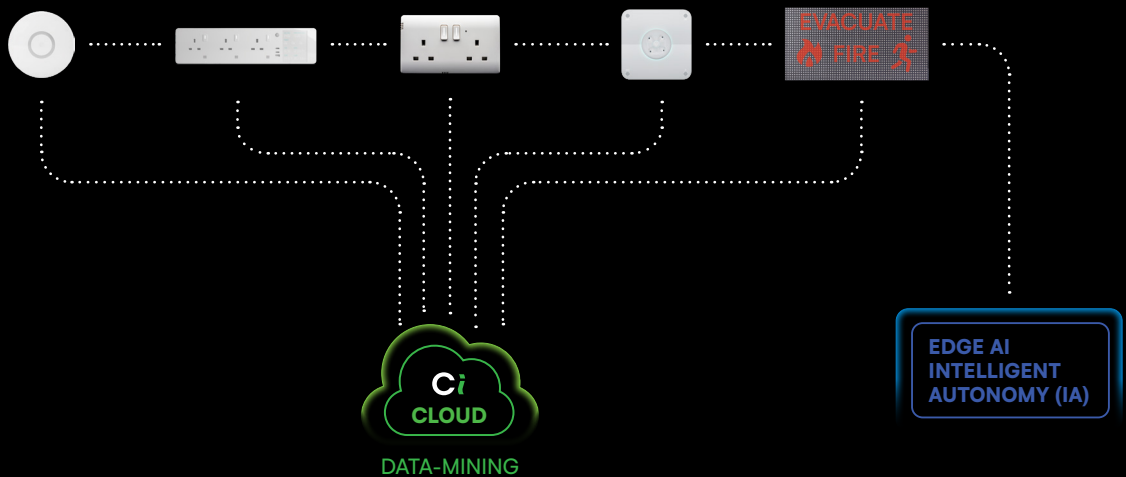


# ALWAYS CONNECTED, ALWAYS LEARNING

With the use of both rule-based and adaptive AI algorithms, collected data is interpreted to identify patterns, spot early signs of danger, and learn how risks evolve over time. Historical data is stored to reveal long-term performance and risk trends — generating predictions that help prevent incidents before they happen.

## REAL-TIME INTELLIGENT DATA FLOW

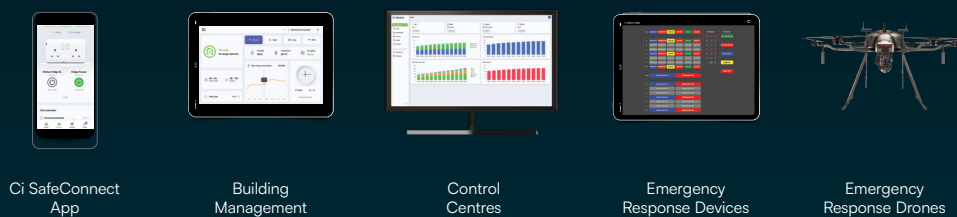
### Ci SAFE DEVICES



EDGE AI  
INTELLIGENT  
AUTONOMY (IA)

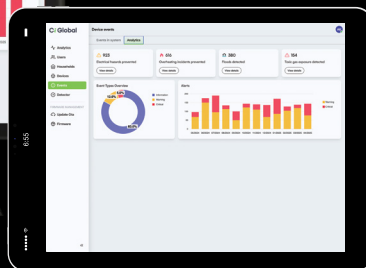
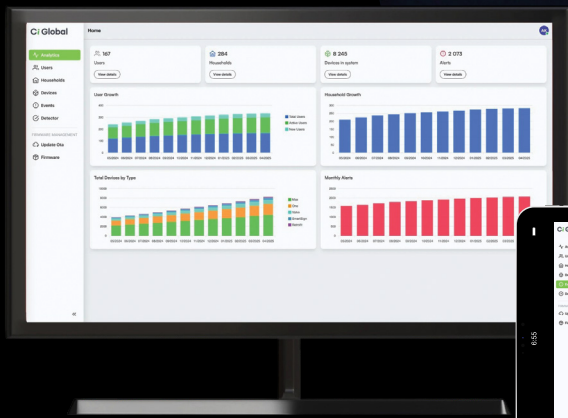
AI

### OUTPUT DEVICES



# REAL-TIME REMOTE MONITORING

Information from Ci Safe devices arrives in real-time, allowing building managers and stakeholders to remotely monitor their property assets, making maintenance quicker and more efficient.



## DESIGNED FOR SCALE AND INTEGRATION

Ci Safe's digital infrastructure is designed to scale across homes, businesses, and cities — gathering meaningful data from a network of millions of connected devices.

This data can also interface easily into existing data-flows, enabling Ci devices to integrate seamlessly with, and enhance other fire safety systems.



# INTELLIGENT AUTONOMY AT THE EDGE

Ci Safe systems combine connected AI with intelligent autonomy (IA) — allowing them to act immediately.

IA requires local edge processing that can detect danger and take action at local socket level.

Devices communicate with each other through a robust self-healing network. The system can autonomously shut down electricity, close water or gas valves, and trigger alerts — instantly and independently.

Combining connected  
AI with Intelligent  
Autonomy (IA)



## MORE THAN JUST HARDWARE

Surrounding this data is a suite of services — from compliance management and maintenance scheduling to risk analytics and insurer-ready reporting.

This isn't just artificial intelligence. It's a fully intelligent building safety ecosystem — combining AI in the cloud with IA at the edge to deliver real prevention, protection, and peace of mind at scale.



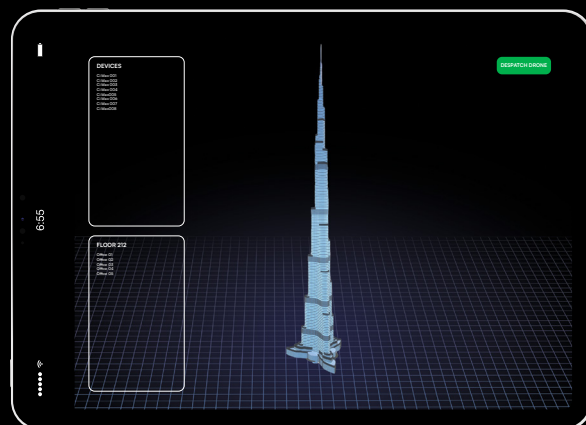
# COMMAND & CONTROL

Giving first-responders life-saving tools for when every second counts.

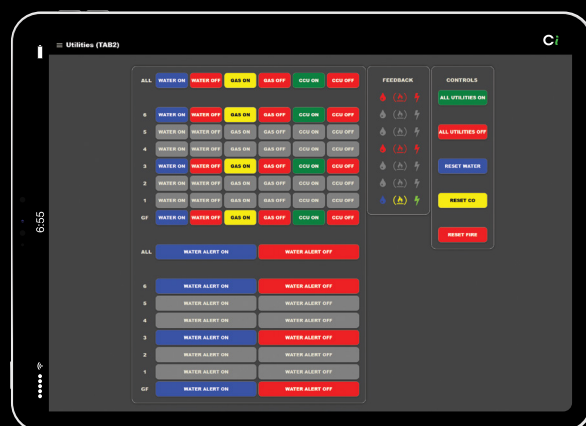
## TOTAL BUILDING AWARENESS

Ci SafeMap: Fire prevention and evacuation solution, combining AI-powered data gathering capabilities with tools and controls for first responders.

Designed for medium-rise, high-rise, and commercial buildings, it delivers critical insights to support faster, safer decisions. This includes locating and communicating with occupants, and remotely controlling utilities — all while reducing risk to emergency crews.



REAL-TIME 3D MAPPING



UTILITY & COMMUNICATION CONTROLS

# SEE THE DANGER. FROM ANYWHERE

**Ci RemoteView: Augmented Reality (AR) headset displays for first responders.**

Combining the power of AppleVision Pro headsets and Unity 3D to place fire fighters remotely inside buildings, in real-time, to take control of serious incidents and evacuations.



# FROM ROOFTOP TO RESPONSE

**Ci Drone: Live rooftop inspection at the speed of emergency.**

When a fire or critical incident strikes a high-rise, every second counts. And visibility can mean the difference between confusion and control.

Ci Drone is a rooftop-mounted, semi-autonomous inspection drone that activates the moment danger is detected — giving fire crews and emergency responders a live 4K video aerial view of the situation within seconds. No guesswork. No delay.

Streamed directly into Ci SafeMap or Ci RemoteView AR headsets, this live feed helps pinpoint the source, spread, and severity of an incident — so responders know exactly what they're dealing with before they step inside.



## Key features:

- Autonomous take-off triggered by emergency detection
- Rooftop-mounted, weather-resistant dock with continuous charging
- Integrated with Ci SafeMap and RemoteView headsets
- 4K video streaming with thermal and night vision
- High-powered LED floodlight for low-visibility or night-time operation
- Two-way audio: listen in or communicate with responders or those trapped

## ABOUT Ci GLOBAL

Every year, electrical faults cause fires that destroy homes, take lives, and devastate communities around the world.

Founded by inventor Anthony D Parfitt, Ci Global exists to make sure no one has to face that kind of loss ever again. We've developed the world's first and only intelligent electrical fire prevention and building safety technology that doesn't just detect danger, but stops fires before they start.

**Ci is leading and pioneering a global shift from reactive to proactive fire and buildings safety. Because the way to honour past tragedies is to prevent the next one.**



## CONTACT Ci GLOBAL

General information  
[info@ci.global](mailto:info@ci.global)

Sales  
[sales@ci.global](mailto:sales@ci.global)

By phone  
**+44 (0) 330 660 0998**

Visit our website  
[ci.global](https://ci.global)

Chairman & Founder  
**Anthony D Parfitt**

Email  
[anthony.parfitt@ci.global](mailto:anthony.parfitt@ci.global)

Mobile  
**+44 (0) 7540 737 989**

Scan the QR code to view  
Ci Global content online.



Proudly  
designed in  
the UK



Connected Innovations Ltd t/a Ci Global, The Oarsman, Riverside Barns, Remenham Lane, Henley-on-Thames, Oxfordshire, RG9 3DB, UK. © Ci Global 2025.



All Ci sockets are certificated to BS1363.